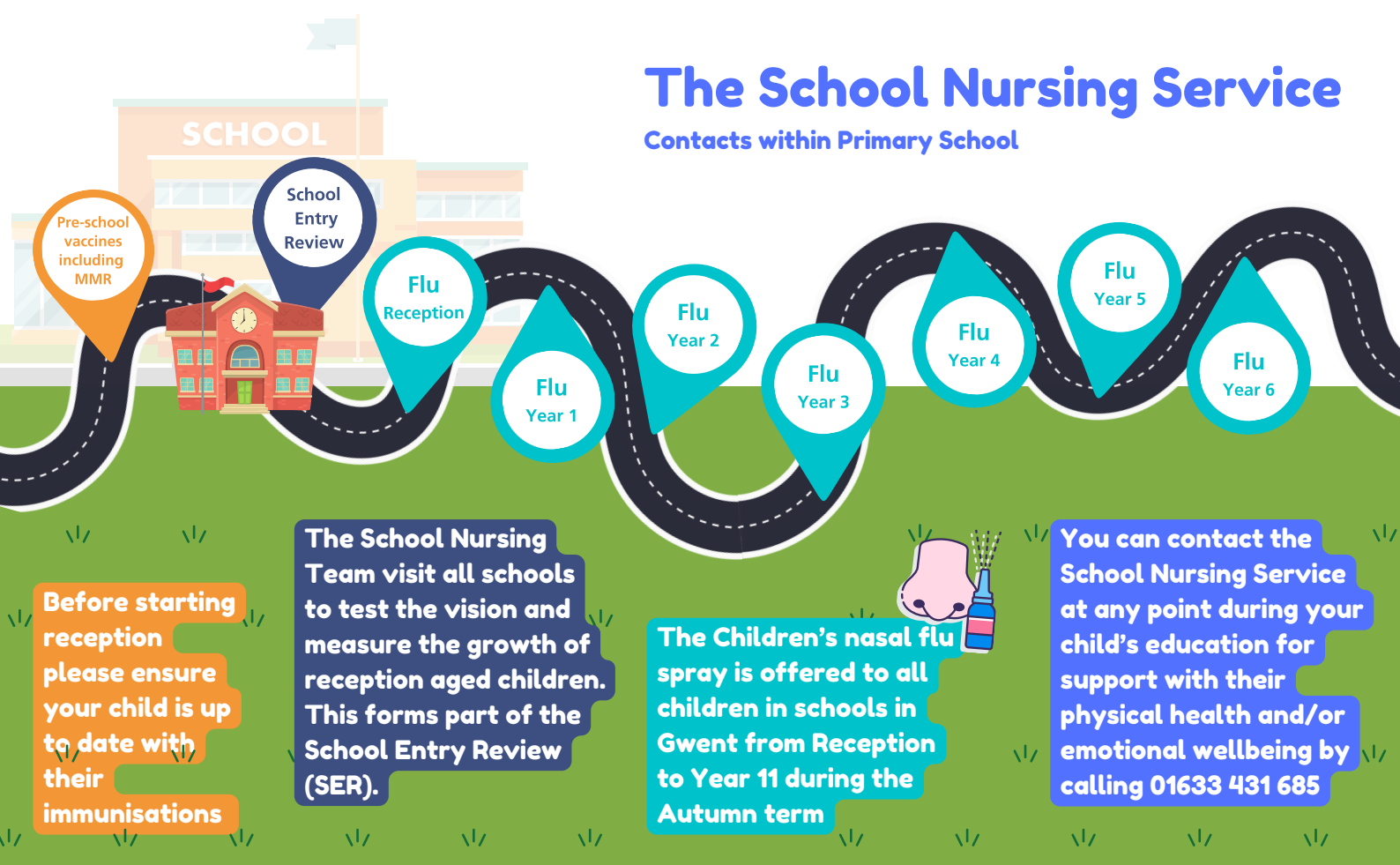


# The School Nursing Service

Contacts within Primary School



Before starting reception please ensure your child is up to date with their immunisations

The School Nursing Team visit all schools to test the vision and measure the growth of reception aged children. This forms part of the School Entry Review (SER).

The Children's nasal flu spray is offered to all children in schools in Gwent from Reception to Year 11 during the Autumn term

You can contact the School Nursing Service at any point during your child's education for support with their physical health and/or emotional wellbeing by calling 01633 431 685



School Nursing Service  
Gwasanaeth  
Nyrsio Ysgol



Bwrdd Iechyd Prifysgol  
Aneurin Bevan  
University Health Board

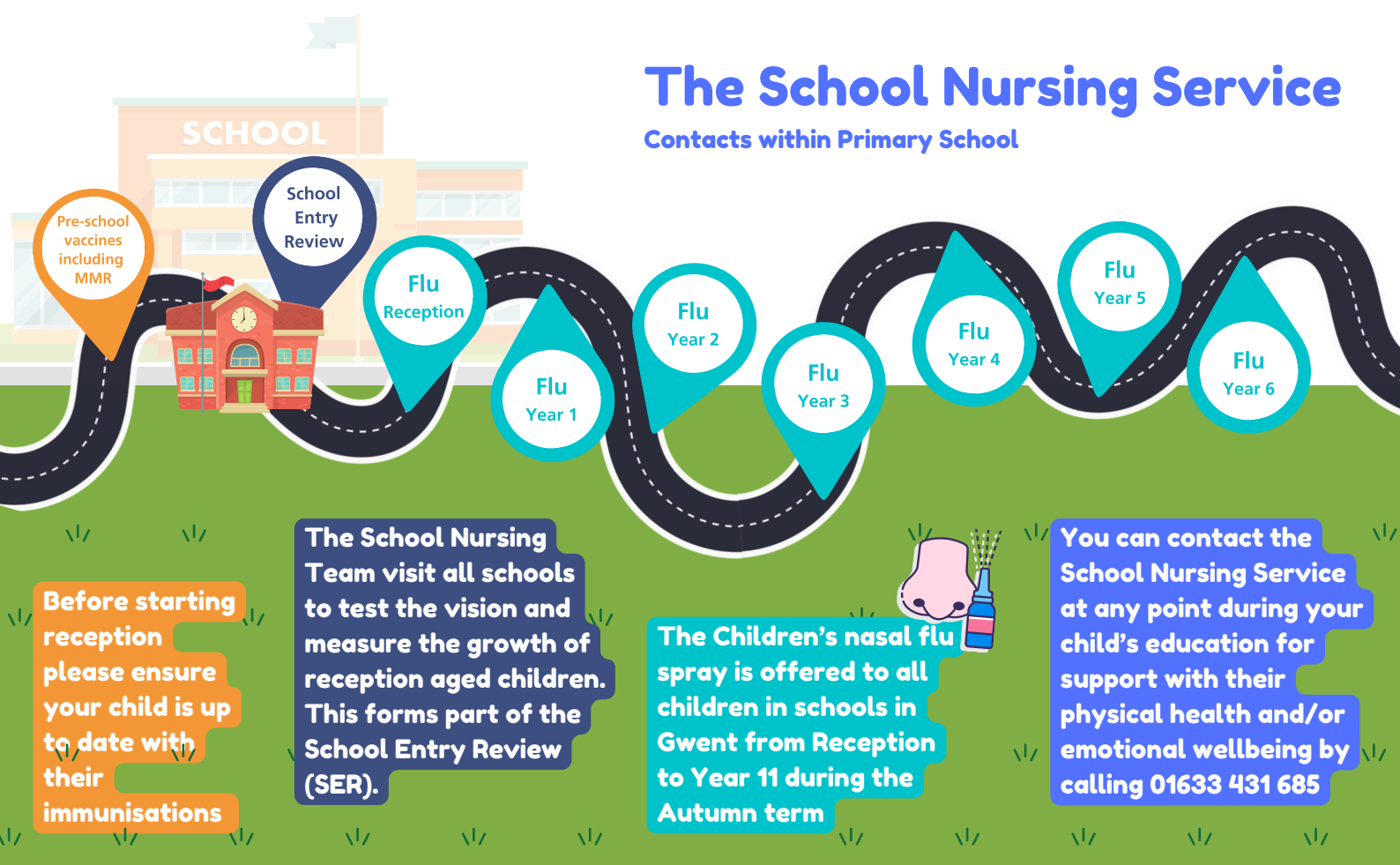


Mae Brechu yn  
acthüb bywydau  
Vaccination  
saves lives



# The School Nursing Service

Contacts within Primary School



Before starting reception please ensure your child is up to date with their immunisations

The School Nursing Team visit all schools to test the vision and measure the growth of reception aged children. This forms part of the School Entry Review (SER).

The Children's nasal flu spray is offered to all children in schools in Gwent from Reception to Year 11 during the Autumn term

You can contact the School Nursing Service at any point during your child's education for support with their physical health and/or emotional wellbeing by calling 01633 431 685



School Nursing Service  
Gwasanaeth  
Nyrsio Ysgol



Bwrdd Iechyd Prifysgol  
Aneurin Bevan  
University Health Board



Mae Brechu yn  
acthüb bywydau  
Vaccination  
saves lives



# Gwasanaeth Nyrsio'r Ysgol

Cysylltiadau o fewn Ysgol Gynradd

**Brechlynnau cyn-ysgol / MMR**

**Adolygiad Mynediad i'r Ysgol**

**Fliw Derbynfa**

**Fliw BI 1**

**Fliw BI 2**

**Ffliw BI 3**

**Ffliw BI 4**

**Fliw BI 5**

**Fliw BI 6**

**Cyn dechrau yn y dosbarth derbyn, gwnewch yn siŵr bod eich plentyn wedi cael ei frechiadau diweddaraf**

**Mae'r Tîm Nyrsio Ysgol yn ymweld â phob ysgol i brofi llygaid a mesur twf plant oed derbyn. Gelwir hyn yn Adolygiad Mynediad i'r Ysgol.**

**Cynigir chwistrell fflw trwynol i bob plentyn mewn ysgolion yng Ngwent o'r Dosbarth Derbyn i Flwyddyn 11 yn ystod tymor yr Hydref.**

**Gallwch gysylltu â Gwasanaeth Nyrsio'r Ysgol ar unrhyw adeg yn ystod addysg eich plentyn i gael cymorth gyda'i iechyd corfforol a/neu ei lesiant emosiynol drwy ffonio 01633 431 685**



School Nursing Service  
Gwasanaeth Nyrsio Ysgol



Bwrdd Iechyd Prifysgol  
Aneurin Bevan  
University Health Board



Mae Brechu yn achub bywydau  
Vaccination saves lives



# Gwasanaeth Nyrsio'r Ysgol

Cysylltiadau o fewn Ysgol Gynradd

**Brechlynnau cyn-ysgol / MMR**

**Adolygiad Mynediad i'r Ysgol**

**Fliw Derbynfa**

**Fliw BI 1**

**Fliw BI 2**

**Ffliw BI 3**

**Ffliw BI 4**

**Fliw BI 5**

**Fliw BI 6**

**Cyn dechrau yn y dosbarth derbyn, gwnewch yn siŵr bod eich plentyn wedi cael ei frechiadau diweddaraf**

**Mae'r Tîm Nyrsio Ysgol yn ymweld â phob ysgol i brofi llygaid a mesur twf plant oed derbyn. Gelwir hyn yn Adolygiad Mynediad i'r Ysgol.**

**Cynigir chwistrell fflw trwynol i bob plentyn mewn ysgolion yng Ngwent o'r Dosbarth Derbyn i Flwyddyn 11 yn ystod tymor yr Hydref.**

**Gallwch gysylltu â Gwasanaeth Nyrsio'r Ysgol ar unrhyw adeg yn ystod addysg eich plentyn i gael cymorth gyda'i iechyd corfforol a/neu ei lesiant emosiynol drwy ffonio 01633 431 685**



School Nursing Service  
Gwasanaeth Nyrsio Ysgol



Bwrdd Iechyd Prifysgol  
Aneurin Bevan  
University Health Board



Mae Brechu yn achub bywydau  
Vaccination saves lives

